



BESTWARE Hardware Production Co., Ltd.

Add: Block 8, No.6, Jianda Nan Road, Jiangmen, Guangdong, China

Email: business@bestware-stainless.com after-sales@bestware-stainless.com

WhatsApp: +86 18929047065 Tel: +86 750 3108801

Wechat: +86 18929047065



Website



YouTube



WhatsApp



Wechat

2025 V2.0



Series Catalog

Expertise in Stainless Steel

SENSOR FAUCET

PREMIER SOLUTION PROVIDER OF ONE-STOP STAINLESS COMMERCIAL FAUCETS

www.bestware-stainless.com

CONTENTS

SENSOR FAUCET

Thermostatic 01

Single Cold 07

✓ Product Advantages

Since its establishment, Bestware has always adhered to the principle of "solving industry pain points through product selling points", creating more value for customers. Below is an overview of our unique selling points.



Sensor Faucet

Pain Points	Selling Points
Manual Temp Control, Lacks Precision	Smart Temperature Control with Precision, Set via Digital Glass Panel ($\pm 1^{\circ}\text{C}$)
Low Sensitivity, Higher Failure Rates	High-sensitivity Activation in 0.2 s and Closure in 1 s with Fast Response
Unstable Temp, Hot and Cold Fluctuations	Smart Sensing for Precise Temp Control, Unaffected by Water Pressure
No Check Valve, Complicated Maintenance	Built-in Check Valve for Auto Shutoff, No Main Valve Shut-off (Model WST Only)

✓ Our Commitments

97%+ Product Satisfaction Upon Receipt by Customers

100% 304/316 Stainless Steel (Unless Specified Otherwise)

100% Product Qualification Rate at Factory Shipment

100% Customer Complaint Resolution Rate



Take Bestware for a spin, and it'll be your go-to forever!

SENSOR FAUCET

EXPERTISE IN STAINLESS STEEL
BESTWARE
 ONE-STOP SOLUTION PROVIDER OF STAINLESS COMMERCIAL FAUCETS

Key Parts	Features
Activation Time	High-sensitivity Activation in 0.2 s and Closure in 1 s with Fast Response
Temp Control	Smart Temp Control with Precision, Set via Digital Glass Panel ($\pm 1^{\circ}\text{C}$)
Water Flow	Smart Sensing for Precise Temp Control, Unaffected by Water Pressure
EMI Resistance	First Sensor Faucet with 10 V/m EMI Resistance for Public
Auto-cleaning	24-hour Auto-cleaning System for Hygienic Water Quality
Water Cutoff Protection	Automatic Shutoff for Cold Water Loss, Power Failure, or Accidental Activation
Special Function	2 in 1 Hand Washing and Soap Dispenser (Available on Select Models)



100% SUS304

0.2S Sensor-activated Water Flow

3X Enhanced EMI Resistance

$\pm 1^{\circ}\text{C}$ Precision (Anti-scald)

Intuitive Temperature Adjustment via Smart Digital Panel

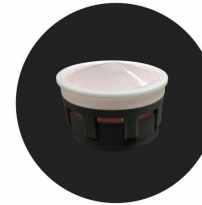
EXPERTISE IN STAINLESS STEEL

BESTWARE
 ONE-STOP SOLUTION PROVIDER OF STAINLESS COMMERCIAL FAUCETS

THERMOSTATIC



Fingerprint-resistant Glass Panel
(Intelligent Temperature Control)



Neoperl Aerator



Sensor Soap Outlet



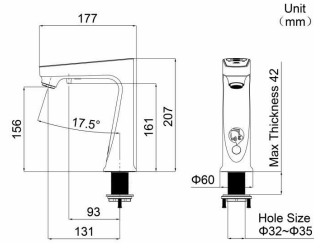
Touchless Activation

THERMOSTATIC

EXPERTISE IN STAINLESS STEEL

BESTWARE

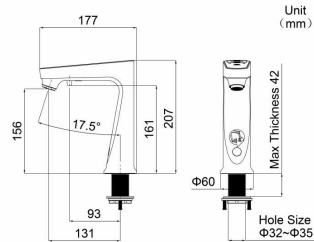
ONE-STOP SOLUTION PROVIDER OF STAINLESS COMMERCIAL FAUCETS



2DHMSTM-S

Deck Mount Multifunctional Sensor Faucet (2 in 1 Hand Washing and Soap Dispenser) - Satin

Attributes	Details
Temp Control	Intelligent, Temp Adjustable Range (35-45°C), Activates Full Cold or Hot Mode with Key
Neoperl Aerator Water Flow	Available in 1.19 GPM (4.5 LPM)
Power Supply Mode	Available in Main Power Supply
Soap Dispenser	2 Adjustable Levels, Low Liquid Warning
Hole Size	Φ32-35 mm



2DHMSTM

Deck Mount Multifunctional Sensor Faucet (2 in 1 Hand Washing and Soap Dispenser) - White

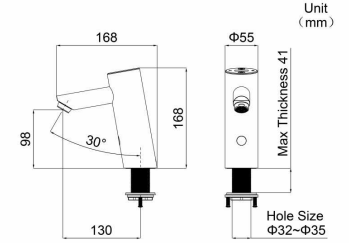
Attributes	Details
Temp Control	Intelligent, Temp Adjustable Range (35-45°C), Activates Full Cold or Hot Mode with Key
Neoperl Aerator Water Flow	Available in 1.19 GPM (4.5 LPM)
Power Supply Mode	Available in Main Power Supply
Soap Dispenser	2 Adjustable Levels, Low Liquid Warning
Hole Size	Φ32-35 mm

EXPERTISE IN STAINLESS STEEL

BESTWARE

ONE-STOP SOLUTION PROVIDER OF STAINLESS COMMERCIAL FAUCETS

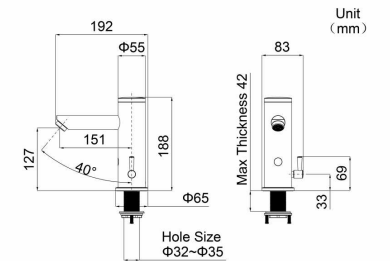
THERMOSTATIC



DHMSTM

Deck Mount Sensor Faucet with Digital Temperature Control

Attributes	Details
Temp Control	Intelligent, Temp Adjustable Range (35-45°C), Activates Full Cold or Hot Mode with Key
Neoperl Aerator Water Flow	Available in 1.19 GPM (4.5 LPM)
Power Supply Mode	Available in Main Power Supply
Hole Size	Φ32-35 mm



THMSTB/THMSTSM

Deck Mount Sensor Faucet with Battery Power Supply/Main Power Supply

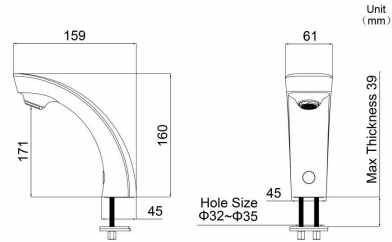
Attributes	Details
Temp Control	Manual Temperature Control with Lever Handle
Neoperl Aerator Water Flow	Available in 1.19 GPM (4.5 LPM)
Power Supply Mode	Available in Battery or Main Power Supply Options
Hole Size	Φ32-35 mm

SINGLE COLD

EXPERTISE IN STAINLESS STEEL

BESTWARE

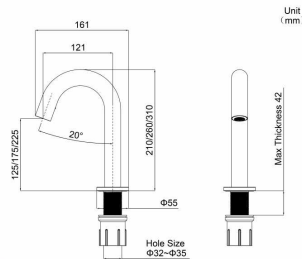
ONE-STOP SOLUTION PROVIDER OF STAINLESS COMMERCIAL FAUCETS



HMSTB/HMSTM

Deck Mount Sensor Faucet with Battery Power Supply/Main Power Supply

Attributes	Details
Sensor Mode	Available in Instant Flow
Neoperl Aerator Water Flow	Available in 1.19 GPM (4.5 LPM)
Power Supply Mode	Available in Battery or Main Power Supply Options
Hole Size	Φ32-35 mm



ST210/260/310B ST210/260/310M

Deck Mount Single-sensor Faucet with Battery Power Supply/Main Power Supply

ST210/260/310BD ST210/260/310MD

Deck Mount Dual-sensor Faucet with Battery Power Supply/Main Power Supply

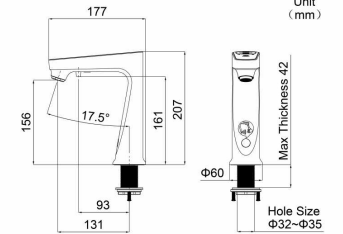
Attributes	Details
Sensor Mode	Available in Instant Flow or Instant+Continuous Flow Mode Options
Neoperl Aerator Water Flow	Available in 1.01 GPM (3.8 LPM)
Power Supply Mode	Available in Battery or Main Power Supply Options
Hole Size	Φ32-35 mm

EXPERTISE IN STAINLESS STEEL

BESTWARE

ONE-STOP SOLUTION PROVIDER OF STAINLESS COMMERCIAL FAUCETS

SINGLE COLD



2DHMSTM_04

Sensor Multifunctional Faucet (2 in 1 Hand Washing and Soap Dispenser) - Satin

Attributes	Details
Neoperl Aerator Water Flow	Available in 1.19 GPM (4.5 LPM)
Power Supply Mode	Available in Main Power Supply
Soap Dispenser	2 Adjustable Levels, Low Liquid Warning
Hole Size	Φ32-35 mm